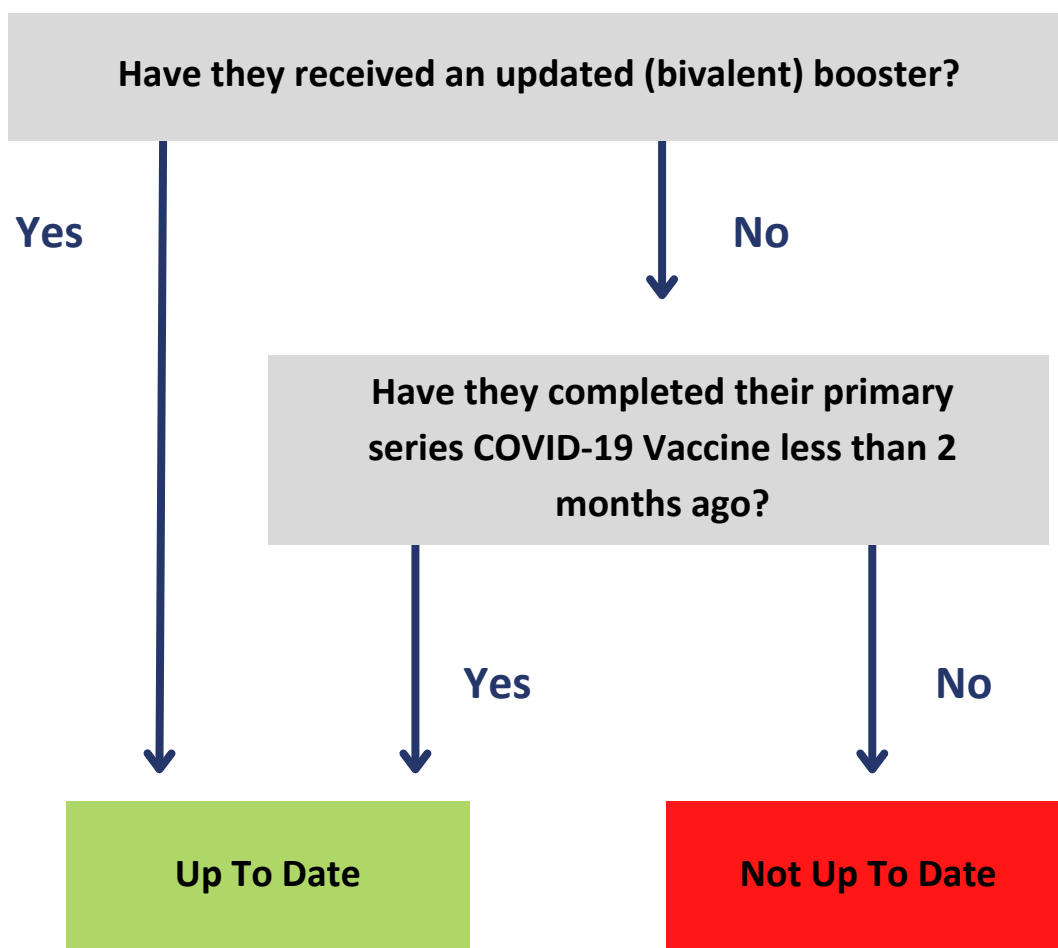


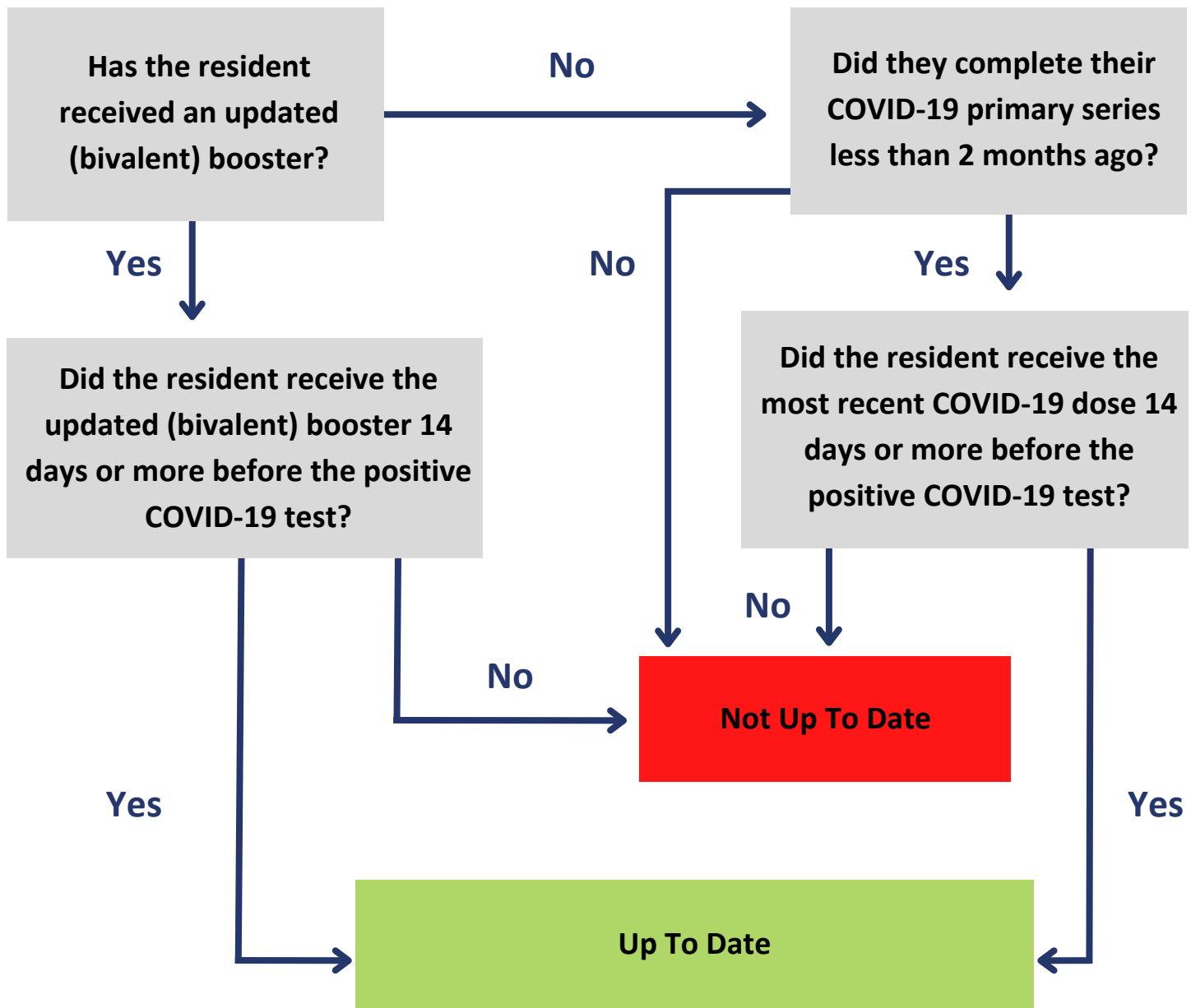
COVID-19 Vaccine Up To Date Decision Tree

Use the following decision tree to help determine up to date vaccination status for the NHSN COVID-19 Vaccination Modules. Up to Date with COVID-19 Vaccines during the surveillance period of December 26, 2022 - March 26, 2023 AND March 27, 2023 - June 25, 2023



Resident Impact and Facility Capacity Pathway (RIFC)

Use the following decision tree to help determine up to date vaccination status for the NHSN COVID-19 Vaccination Module RIFC Pathway.



Long-Term Care Facilities can use the following decision tree to help determine up to date vaccination status for the RIFC Pathway. Source: CDC NHSN Up to Guidance; updated March 27, 2023 <https://www.cdc.gov/nhsn/pdfs/hps/covidvax/UpToDateGuidance-508.pdf>



This material was prepared by Great Plains Quality Innovation Network, a Quality Innovation Network – Quality Improvement Organization, under contract with the Centers for Medicare & Medicaid Services (CMS), an agency of the U.S. Department of Health and Human Services (HHS). Views expressed in this material do not necessarily reflect the official views or policy of CMS or HHS, and any reference to a specific product or entity herein does not constitute endorsement of that product or entity by CMS or HHS. 12SOW/GPQIN/QIN-QIO-259/123