



# Friday Focus 4 Health

A diverse and collaborative learning experience  
designed to improve patient outcomes



## Strategies for Opioid Misuse

Fridays | 12:00 - 12:30 pm CT

March **10**, 17, 24, 31

**One topic.** 4 weeks. **30 minutes.** **YOUR** pace.



# Awareness of Prescription Opioid Misuse



## [Rx Awareness Campaign Trailer – YouTube](#)

**There is hope. Recovery is possible.**

[cdc.gov/RxAwareness](https://cdc.gov/RxAwareness)



2:28

### Rx Awareness Campaign Trailer

3.6K views · Oct 19, 2020

YouTube › Centers for Disease Control and Preventi...

# Series Overview



- Week 1: Primary Prevention
- Week 2: Naloxone training/Take back program
- Week 3: Medication-Assisted Treatment (MAT)
- Week 4: Diversion
- Weekly: Eliminating Stigma

# Achieving Health Equity around Overdoses



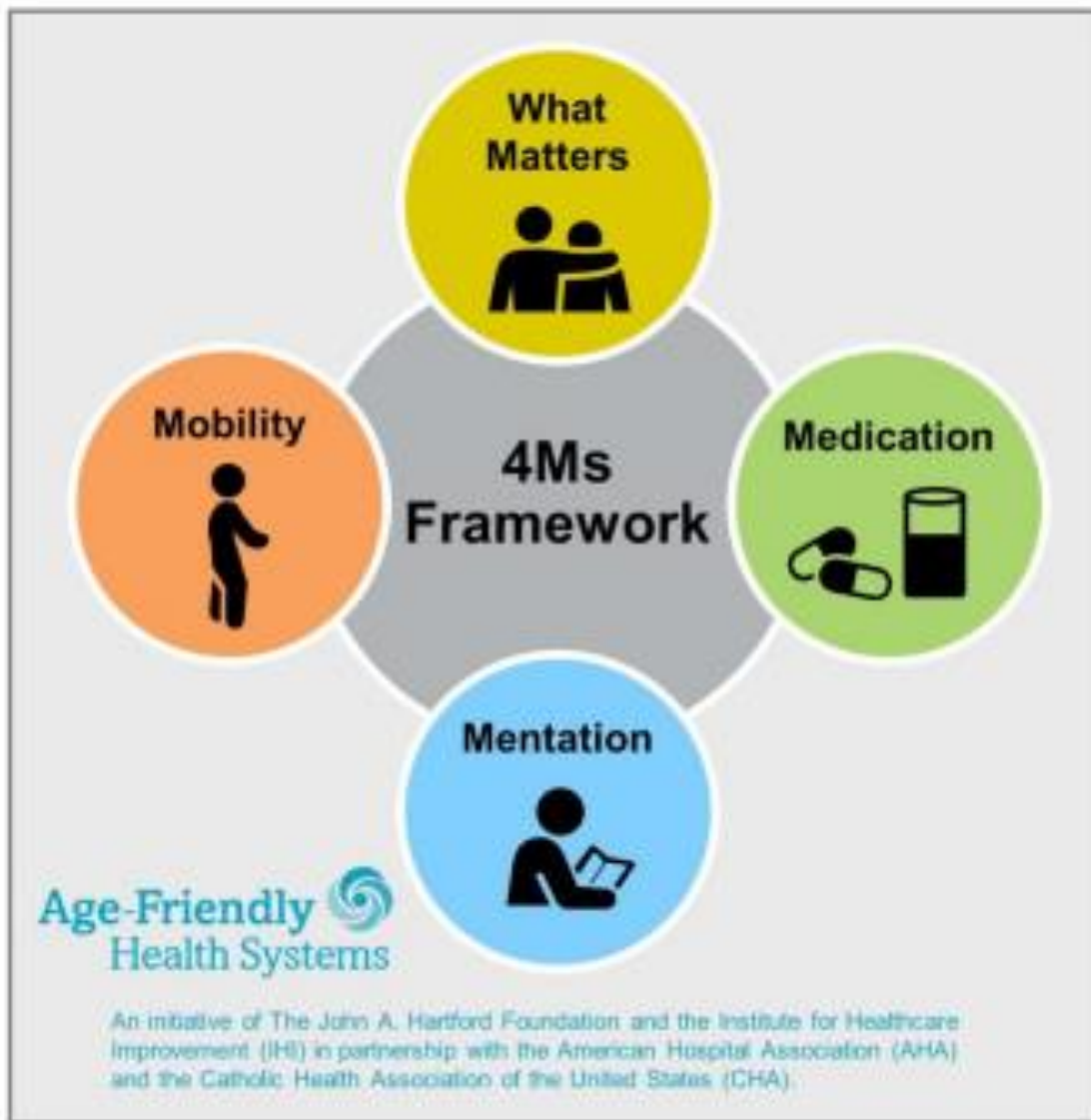
## Overdose Death Disparities Are on the Rise. What Now?

- Use culturally appropriate practices
- Provide support groups
- Link people to care and recovery
- Expand insurance coverage
- Offer telehealth
- Reduce criminalization
- Build structural support
- Reduce stigma

**Vital**<sup>CDC</sup>signs™  
Source: July 2022 Vital Signs

CS331041

[Vital Signs report.](#)



## What Matters

Know and align care with each older adult's specific health outcome goals and care preferences including, but not limited to, end-of-life care, and across settings of care.

## Medication

If medication is necessary, use Age-Friendly medication that does not interfere with What Matters to the older adult, Mobility, or Mentation across settings of care.

## Mentation

Prevent, identify, treat, and manage dementia, depression, and delirium across settings of care.

## Mobility

Ensure that older adults move safely every day in order to maintain function and do What Matters.

For related work, this graphic may be used in its entirety without requesting permission.  
Graphic files and guidance at [ihi.org/AgeFriendly](http://ihi.org/AgeFriendly)

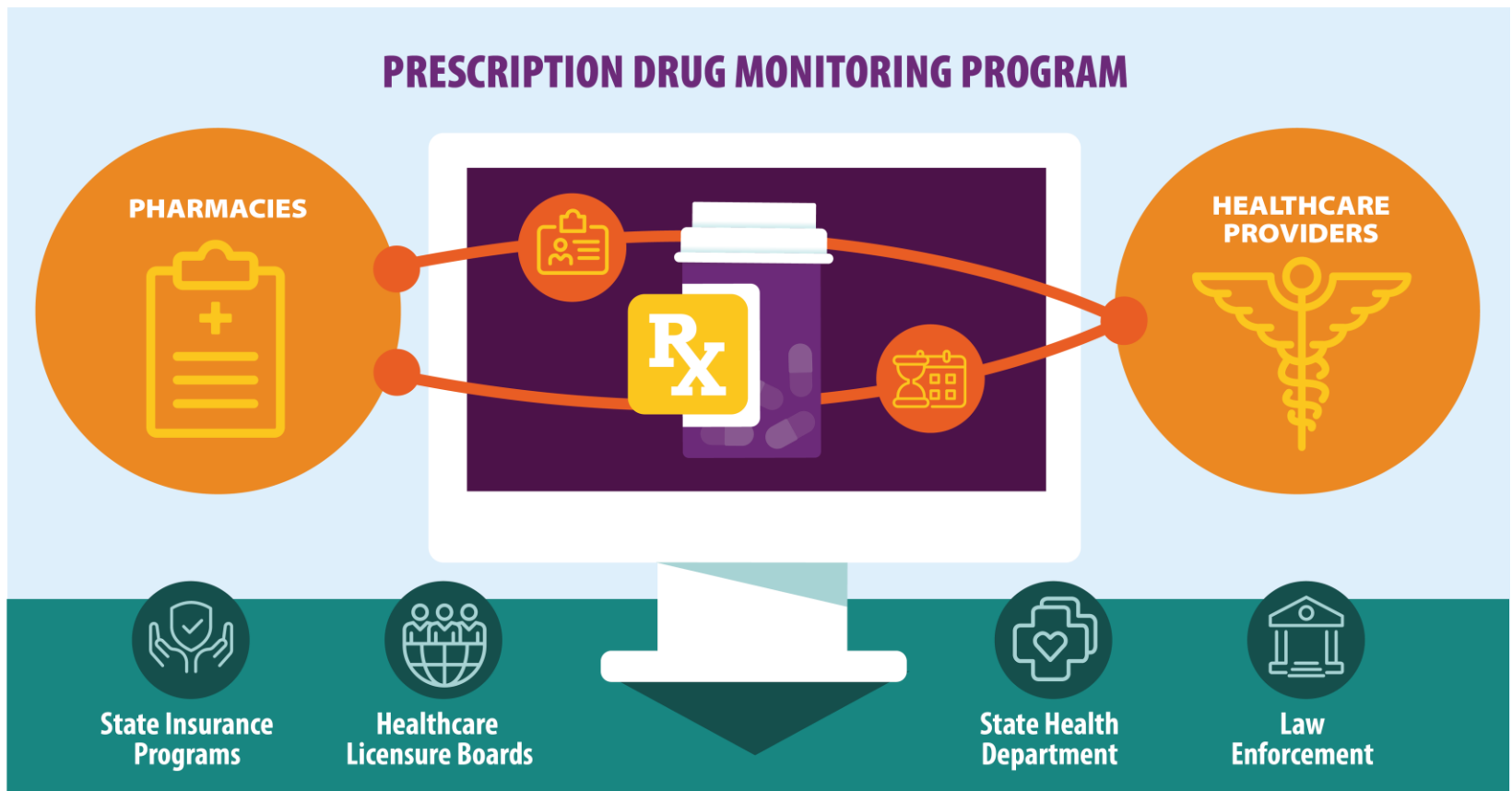
# Primary Prevention Strategies



## [Summary of the 2022 Clinical Practice Guideline for Prescribing Opioids for Pain | Opioids | CDC](#)

- Assess if opioid needed (shortest duration, and frequent follow-up)
  - Non-opioid pharmacologic therapy
  - Non-pharmacologic therapy (ex. Comfort tool)
  
- Risk Assessment for potential harm
  - Naloxone
  - Consider drug testing for ALL patients
  - Prescription Drug Monitoring Program (PDMP)

# Prescription Drug Monitoring Program (PDMP)



[Prescription Drug Monitoring Programs \(PDMPs\) | Drug Overdose | CDC Injury Center](#)

# Morphine Milligram Equivalent Calculator



- [Morphine Milligram Equivalents \(MME\) Calculator - MDCalc](#)
- [https://www.cdc.gov/drugoverdose/pdf/calculating\\_total\\_daily\\_dose-a.pdf](https://www.cdc.gov/drugoverdose/pdf/calculating_total_daily_dose-a.pdf)





# ND and SD Resources



- [PDMP - North Dakota Board of Pharmacy](#)
- [SD Pharmacy Board - Prescription Drug Monitoring Program - SD Dept. of Health](#)
- [Evidence-Based Prevention Strategies Targeting Opioid Abuse and Overdose | ND Health and Human Services](#)
- [Avoid Opioid SD](#)

# Additional Resources/Tools



- [Summary of the 2022 Clinical Practice Guideline for Prescribing Opioids for Pain | Opioids | CDC](#)
- [Calculating Total Daily Dose of Opioids For Safer Dosage \(cdc.gov\)](#)
- [Morphine Milligram Equivalents \(MME\) Calculator - MDCalc](#)

# Leave in Action



- [GPQIN Quality Improvement Project Guide & Tools](#)
  - Build Team
  - Collect/Analyze Data
  - Define Problem (after looking at your data)
    - Opioid prescribing patterns; scripts or order sets
    - Use of PDMP documented in EHR
    - Risk assessments for those on opioids
    - Opioid event Admissions/Readmissions/ED visits
    - Naloxone Prescriptions

# Office Hours

## Questions & Open Discussion

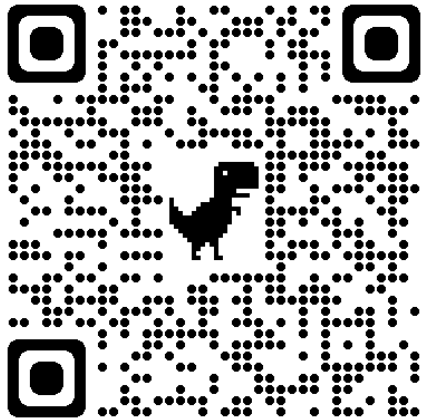


# Polling Question



What opioid misuse strategy are you most interested in implementing at your facility?

# Thank You For Joining | Share Your Feedback



Scan the QR code  
*OR...*  
Access the link (via chat) to  
complete the evaluation

Join the conversation! Join our Community Coalition Listserv:  
<https://gaggle.email/join/communitycoalition@groups.greatplainsqin.org>



# Naloxone Conversations



- 7 videos (3 min total)