



Friday Focus 4 Health

A diverse and collaborative learning experience
designed to improve patient outcomes



Patient Safety - *C. difficile*

Fridays | 12:00 - 12:30 pm CT

March **10**, 17, 24, 31

One topic. 4 weeks. **30 minutes.** YOUR pace.



CLOSTRIDIoidES DIFFICILE

(formerly known as *Clostridium difficile*)

Clostridioides difficile (also known as *C. diff*) is a bacterium that causes diarrhea and colitis (an inflammation of the colon). *C. diff* infection can be life-threatening.

IMPACT



C. diff infection is estimated to cause almost half a million illnesses in the United States each year, and an estimated 29,300 deaths.¹



About **1 in 6 patients** who get *C. diff* infection will get it again in the subsequent 2–8 weeks.¹



One in 11 people over 65 diagnosed with a healthcare-associated *C. diff* infection die within a month.²

[Safe from CDI Roadmap and Toolkit \(PDF\)](#)

[C diff Toolkit for LTCF](#)

<https://www.health.state.mn.us/diseases/cdiff/hcp/roadmaps/index.html>

Hospitalizations due to CDI



2.1: Hospitalizations due to Clostridium difficile Infection (CDI) (Long-Stay) *



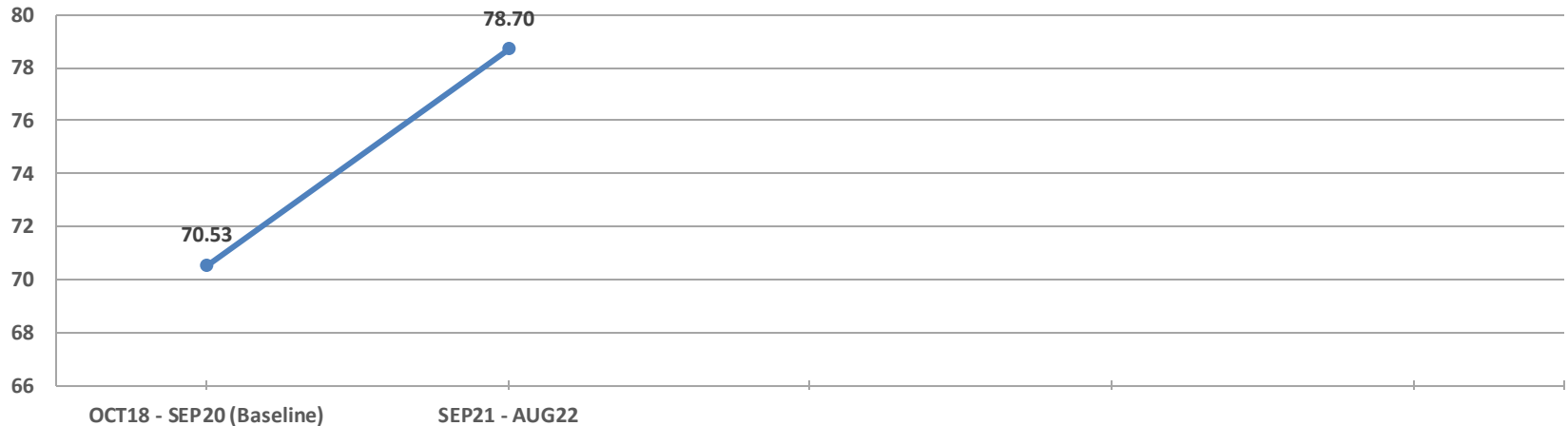
Lower is Better

—●— Performance

Hospitalizations due to CDI



2.1: Hospitalizations due to Clostridium difficile Infection (CDI) (Short-Stay) *



Lower is Better

—●— Performance

CDI IMPACT



Apply Age-Friendly Principles



Example CDI Prevention Policy



Example CDI Prevention and Control Policy

Policy: *Clostridium difficile* Infection (CDI) Prevention and Control and Treatment of Residents

Purpose: The purpose of this policy is to reduce the acquisition and transmission of *C. difficile* in this facility, and to provide guidelines for the care of residents with CDI.

Facility Name:

Effective date:

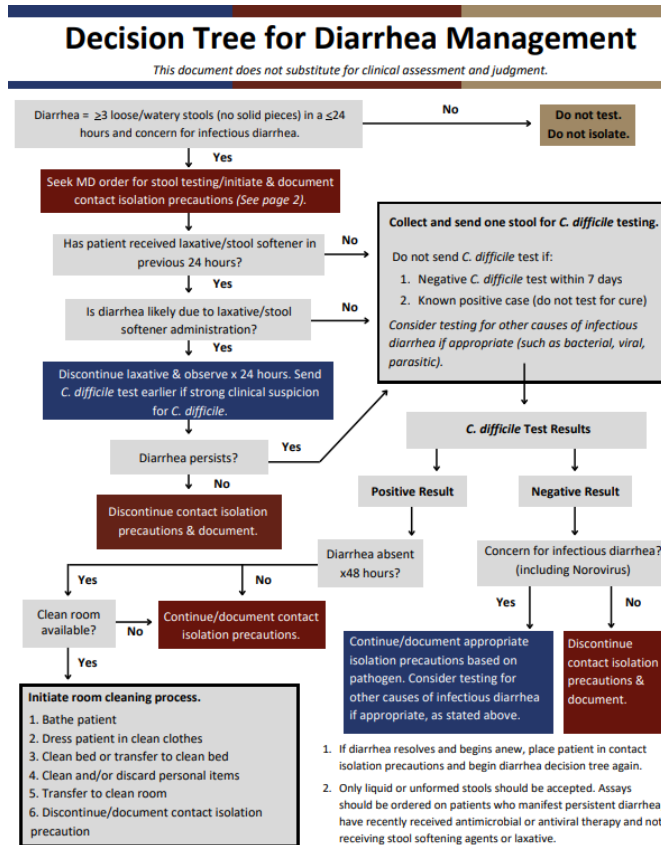
Review date:

Approvals: *[Medical director, or other approving authority]*

Responsibility: *[nursing staff, environmental services/housekeeping, etc.]*

<https://www.health.state.mn.us/diseases/cdiff/hcp/ltctoolkit/index.html#NaN>

Decision Tree for Diarrhea Management



Leave in Action



- [Great Plains QIN Quality Improvement Project Guide and Tools](#)
 - [Build team](#)
 - Collect/Analyze Data
 - Define Problem

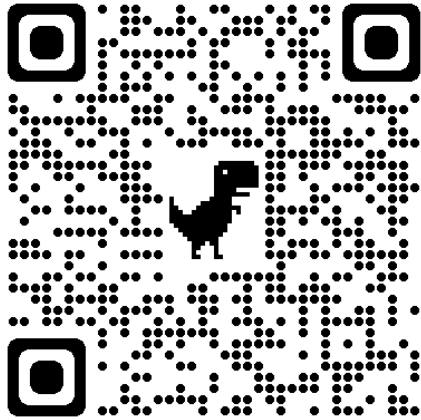


Office Hours

Questions & Open Discussion



Thank You For Joining | Share Your Feedback



Scan the QR code
OR...
Access the link (via chat) to
complete the evaluation

Join the conversation! Join our Community Coalition Listserv:

<https://gaggle.email/join/communitycoalition@groups.greatplainsqin.org>

