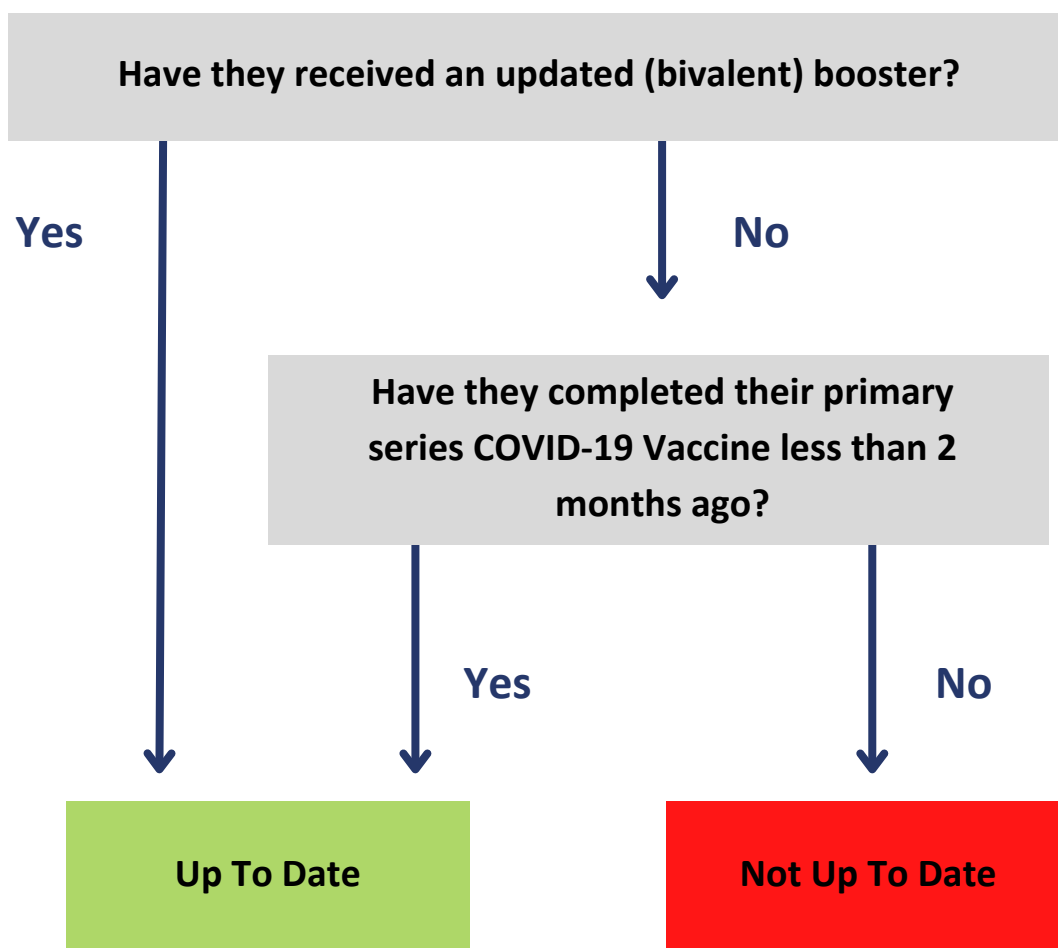


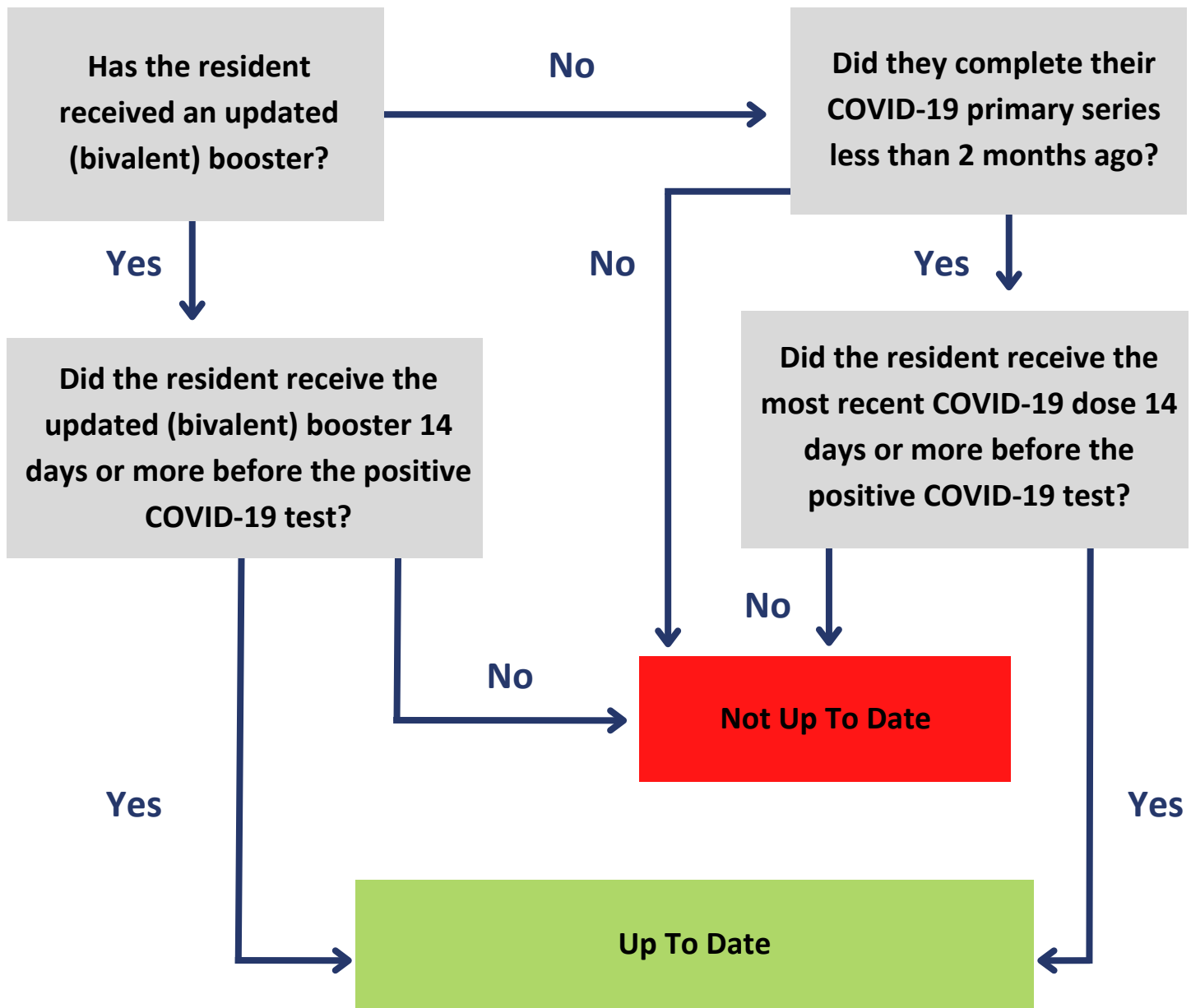
COVID-19 Vaccine Up To Date Decision Tree

Use the following decision tree to help determine up to date vaccination status for the NHSN COVID-19 Vaccination Modules. Up to Date with COVID-19 Vaccines during the surveillance period of December 26, 2022 - March 26, 2023 AND March 27, 2023 - June 25, 2023



Resident Impact and Facility Capacity Pathway (RIFC)

Use the following decision tree to help determine up to date vaccination status for the NHSN COVID-19 Vaccination Module RIFC Pathway.



Long-Term Care Facilities can use the following decision tree to help determine up to date vaccination status for the RIFC Pathway. Source: CDC NHSN Up to Guidance; updated March 27, 2023 <https://www.cdc.gov/nhsn/pdfs/hps/covidvax/UpToDateGuidance-508.pdf>

